



SOUTH BURNETT
REGIONAL COUNCIL

AGENDA

Special Council Meeting Wednesday, 18 November 2020

I hereby give notice that a Special Meeting of Council will be held on:

Date: Wednesday, 18 November 2020

Time: 9.00am

**Location: Warren Truss Chamber
45 Glendon Street
Kingaroy**

**Mark Pitt PSM
Chief Executive Officer**

In accordance with the *Local Government Regulation 2012*, please be advised that all discussion held during the meeting is recorded for the purpose of verifying the minutes. This will include any discussion involving a Councillor, staff member or a member of the public.

Order Of Business

1	Opening	4
2	Attendance	4
3	Leave of Absence / Apologies	4
4	Prayers	4
5	Declaration of Interest	4
6	Portfolio – Roads & Drainage	5
	6.1 Kingaroy Transformation Project - Design Update.....	5
7	Closure of Meeting	42

- 1 OPENING**
- 2 ATTENDANCE**
- 3 LEAVE OF ABSENCE / APOLOGIES**
- 4 PRAYERS**
- 5 DECLARATION OF INTEREST**

6 PORTFOLIO – ROADS & DRAINAGE**6.1 KINGAROY TRANSFORMATION PROJECT - DESIGN UPDATE****File Number:** 18-11-2020**Author:** General Manager Infrastructure**Authoriser:** Chief Executive Officer**PRECIS**

Kingaroy Transformation Project – Design Update

SUMMARY

Kingaroy Transformation Project is joint funded project between the Australian Government and South Burnett Regional Council. This report provides a presentation of the current design and public release of the revised community shared space.

OFFICER'S RECOMMENDATION

That Council note the updated design presentation for Kingaroy Transformation Project and publicly release the revised design for the community shared space.

BACKGROUND

Kingaroy Transformation Project is joint funded project between the Australian Government and South Burnett Regional Council. This report provides a presentation of the current design and public release of the revised community shared space.

ATTACHMENTS

- 1. KTP - Design Update Presentation**



Kingaroy Transformation Project

Special Meeting of Council 18th November 2020



For further information contact the project team at KTP@southburnett.qld.gov.au or call 4189 9100.

www.southburnett.qld.gov.au

Agenda

- Outcomes and Objectives
- Scope of Works
- Plans / Designs
- Renders
- Shared Zone
- Construction Scheduling
- Timelines and Key Dates



COMMUNITY ACTIVATION

ECONOMIC REGENERATION

Outcomes and Objectives

- Human and Social
 - Inclusiveness and Access for all people
 - Developing Improved Cultural experiences and opportunities for residents and visitors
 - Creating a Community of Choice and Opportunities for Positive Growth
 - Supporting Community Events, Activation and Engagement
 - Community Safety Improvements
 - Building and Enhancing Community Pride
- Infrastructure Renewal and Modernisation
 - Smart Country - developing fit for purpose pathways for connectivity and future readiness
 - Improved Pedestrian Safety and Night Time Security
 - Replacement of Roads, Water, Footpaths, Kerb and Channel, Street Lighting



COMMUNITY ACTIVATION

ECONOMIC REGENERATION

Outcomes and Objectives

- Economic Regeneration and Recovery
 - Job Creation (Direct and Indirect) during construction
 - Economic Benefits (construction & ongoing)
 - Increased business activity and opportunity both daytime and night-time
 - Enhanced Online opportunities with high-speed internet and the Internet of things
- Identity and Recognition
 - South Burnett Regionalisation inclusion and recognition of linkages
 - Recognition of First Nations People
 - Facilitating Kingaroy Identity recognition



COMMUNITY ACTIVATION

ECONOMIC REGENERATION

Scope of Works

In Scope

- Asset Renewal
 - Road & Footpaths
 - Kerb & Channel
 - Water & Storm water
 - Ergon Undergrounding
 - Street Lighting
- Enhancement
 - Parking & Pedestrian Safety
 - Landscape & Treescape
 - Feature Lighting
 - Smart Country and Technology Upgrades

Out of Scope

- Façade Improvements
- Internal Building Improvements
- Installation of Fibre to the Node
- Electric Car Charging Stations
- Public WIFI



COMMUNITY ACTIVATION

ECONOMIC REGENERATION

Plans / Designs

Design Walk Through

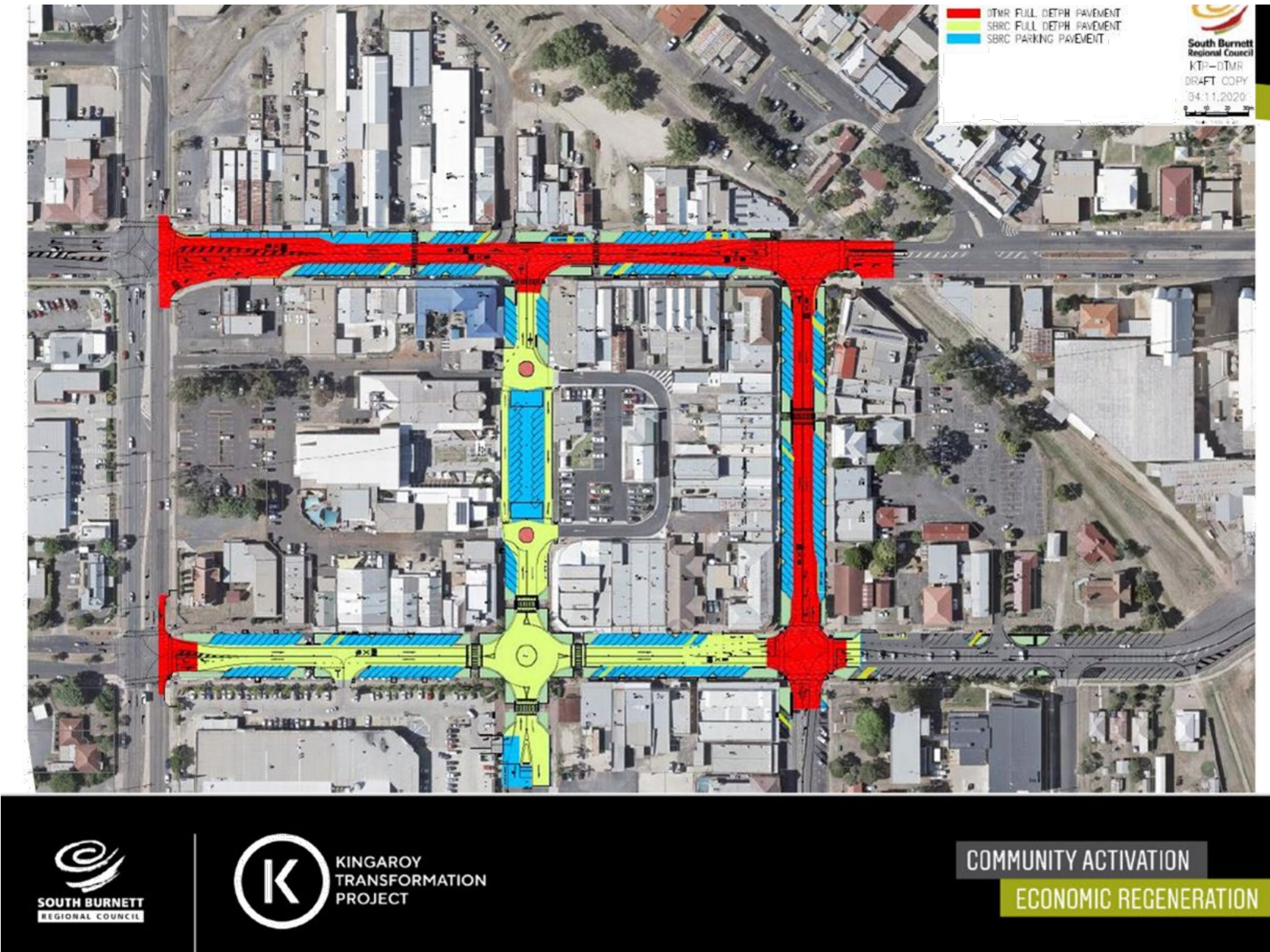
- Engineering Design Principles (Safety, PWD, Parking, CPTED)
- Layouts (Layout, Artwork Locations Overall Scope, Parking)
- Cross sections- highlighting Electrical / Comms / Water
- Street Lighting Design – to meet Engineering Standards , LED Solar Offset, Power Savings, Feature Lighting, CCTV, CPTED
- Renders – Design Intent including layout, colour, furniture, feature lighting and landscaping
- Landscape, Irrigation and TreeScape Design
- Alfresco areas
- Shared Zone Concept and Consultation

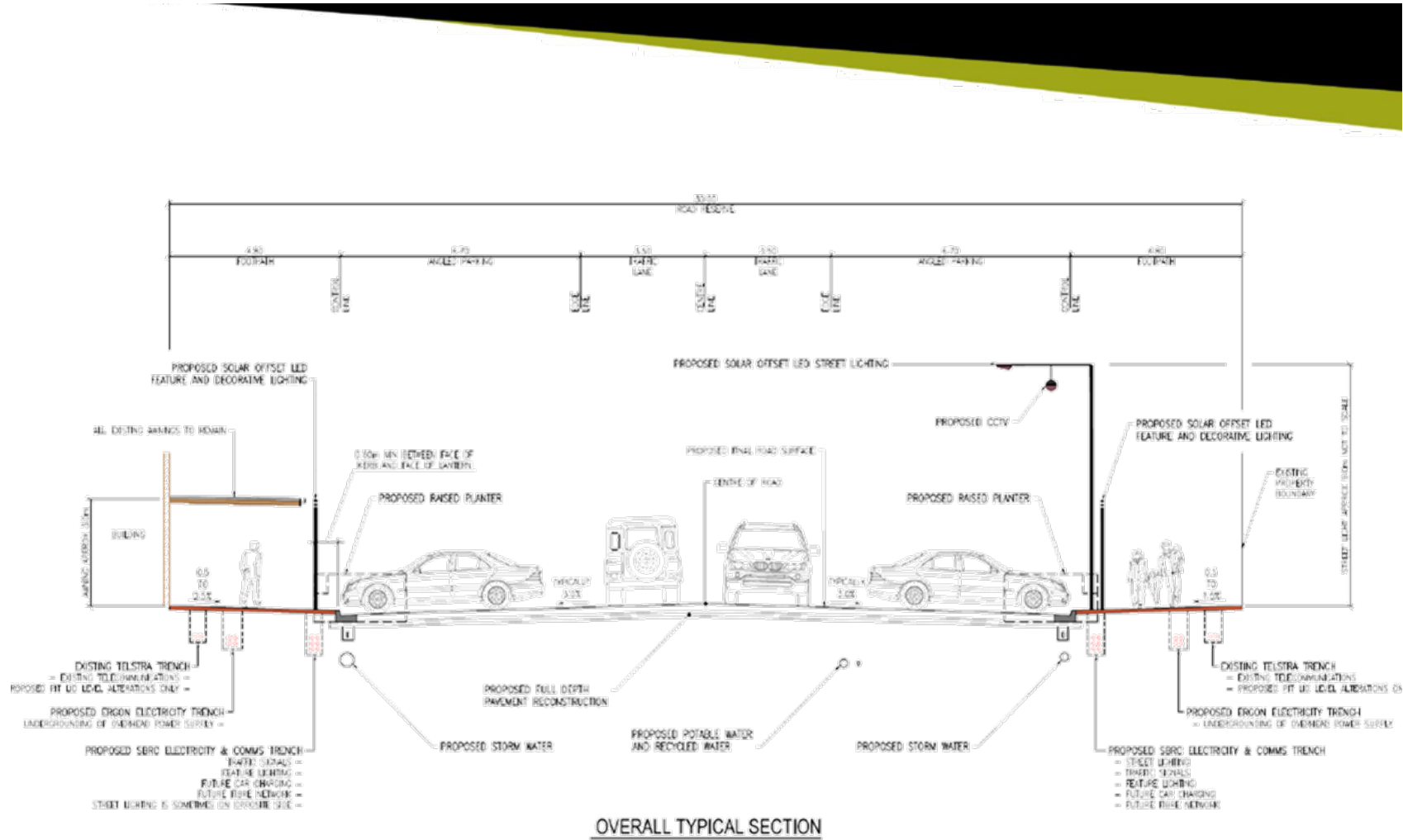



COMMUNITY ACTIVATION

ECONOMIC REGENERATION









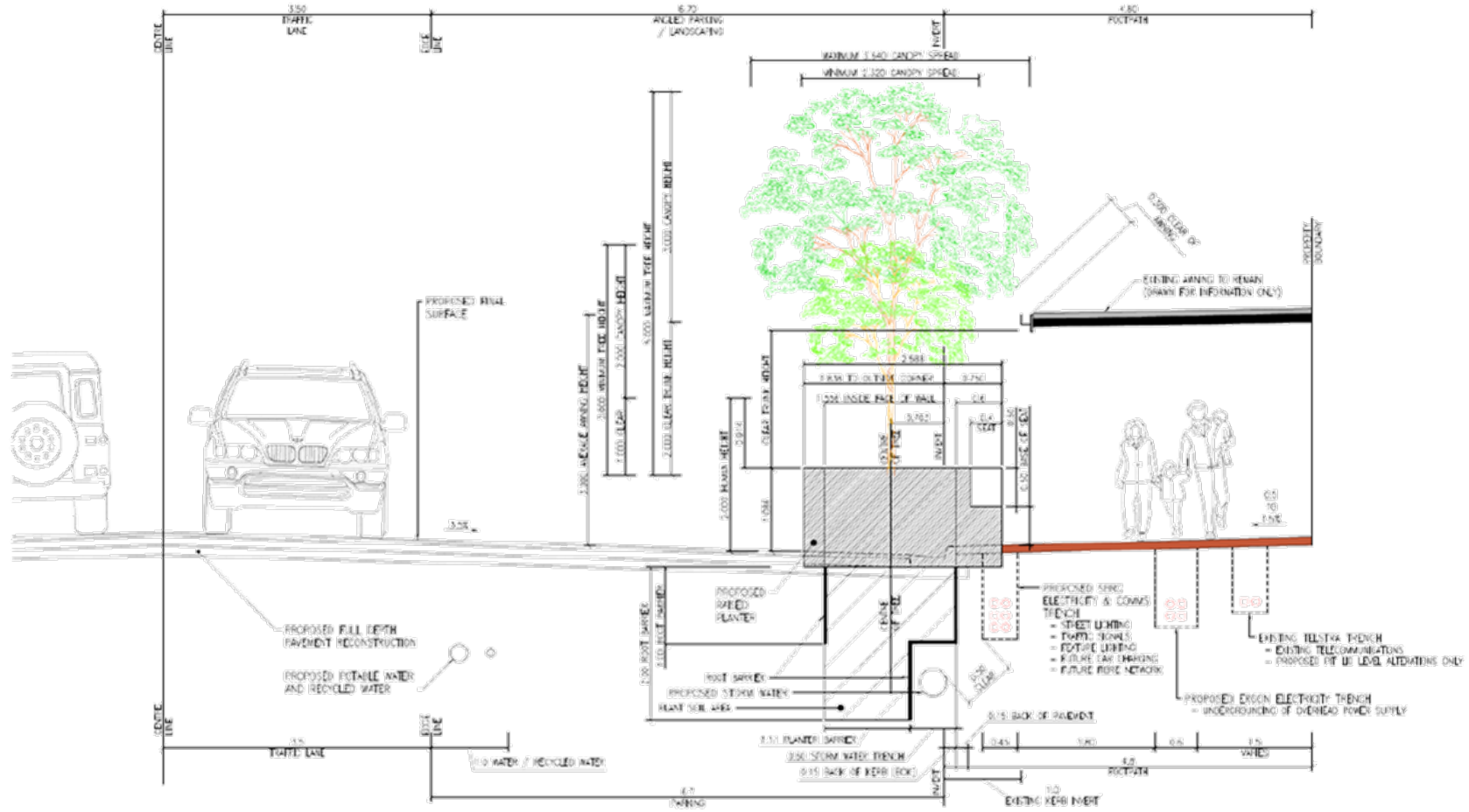
**SOUTH BURNETT
REGIONAL COUNCIL**



**KINGAROY
TRANSFORMATION
PROJECT**

COMMUNITY ACTIVATION

ECONOMIC REGENERATION



TYPICAL SECTION



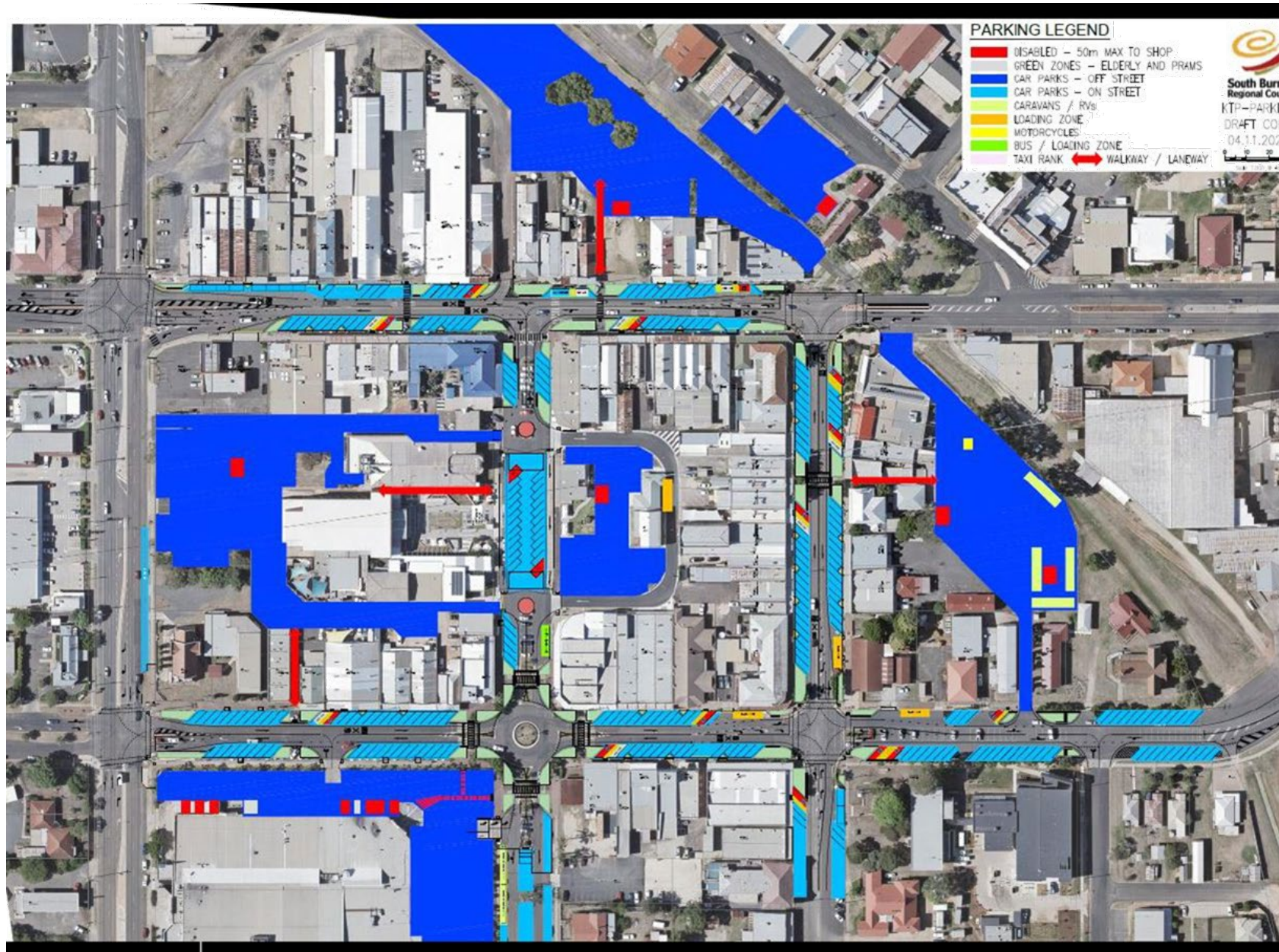
SOUTH BURNETT
REGIONAL COUNCIL

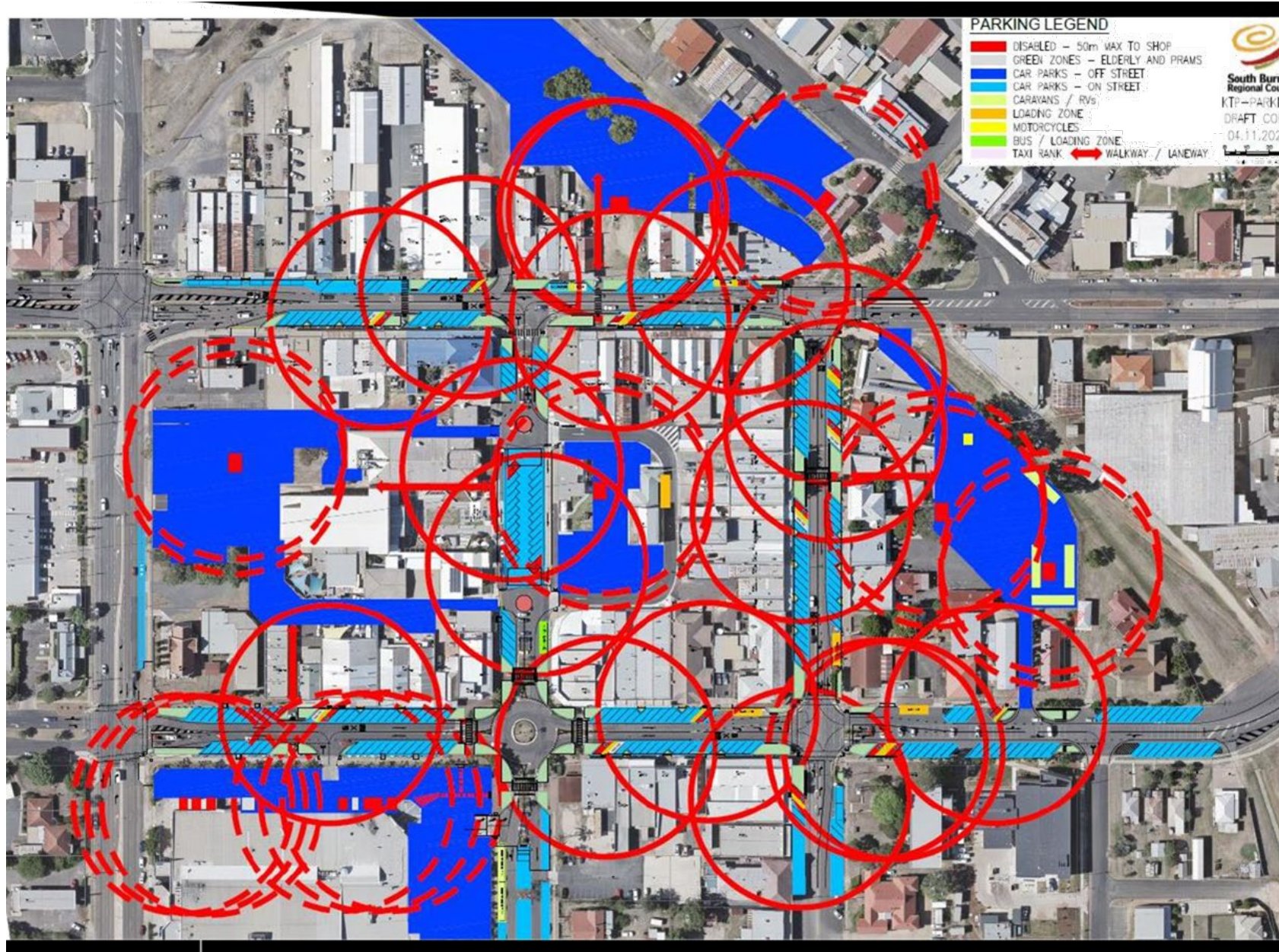


K KINGAROY
TRANSFORMATION
PROJECT

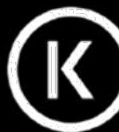
COMMUNITY ACTIVATION

ECONOMIC REGENERATION









KINGAROY
TRANSFORMATION
PROJECT

COMMUNITY ACTIVATION

ECONOMIC REGENERATION



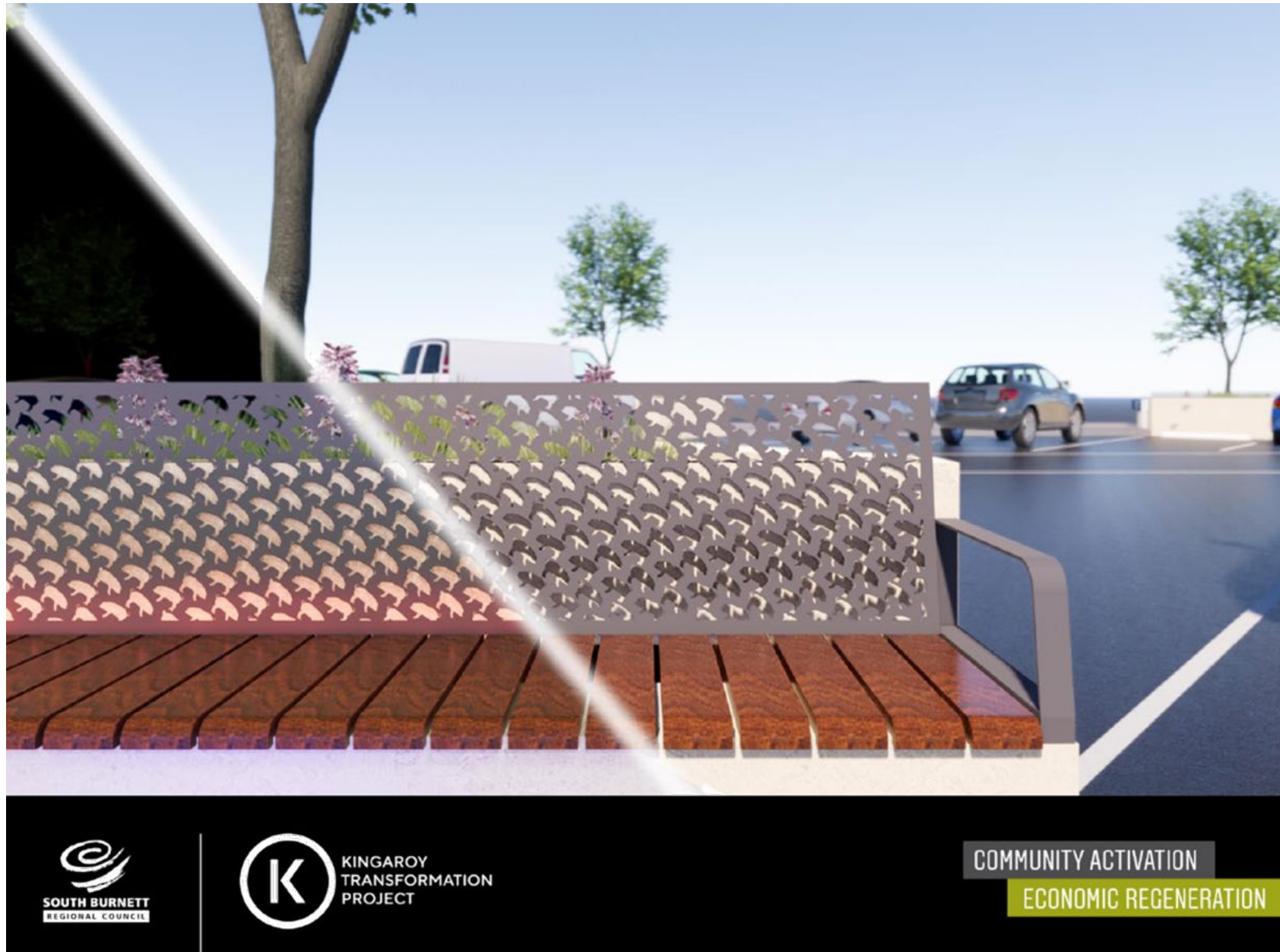


COMMUNITY ACTIVATION
ECONOMIC REGENERATION

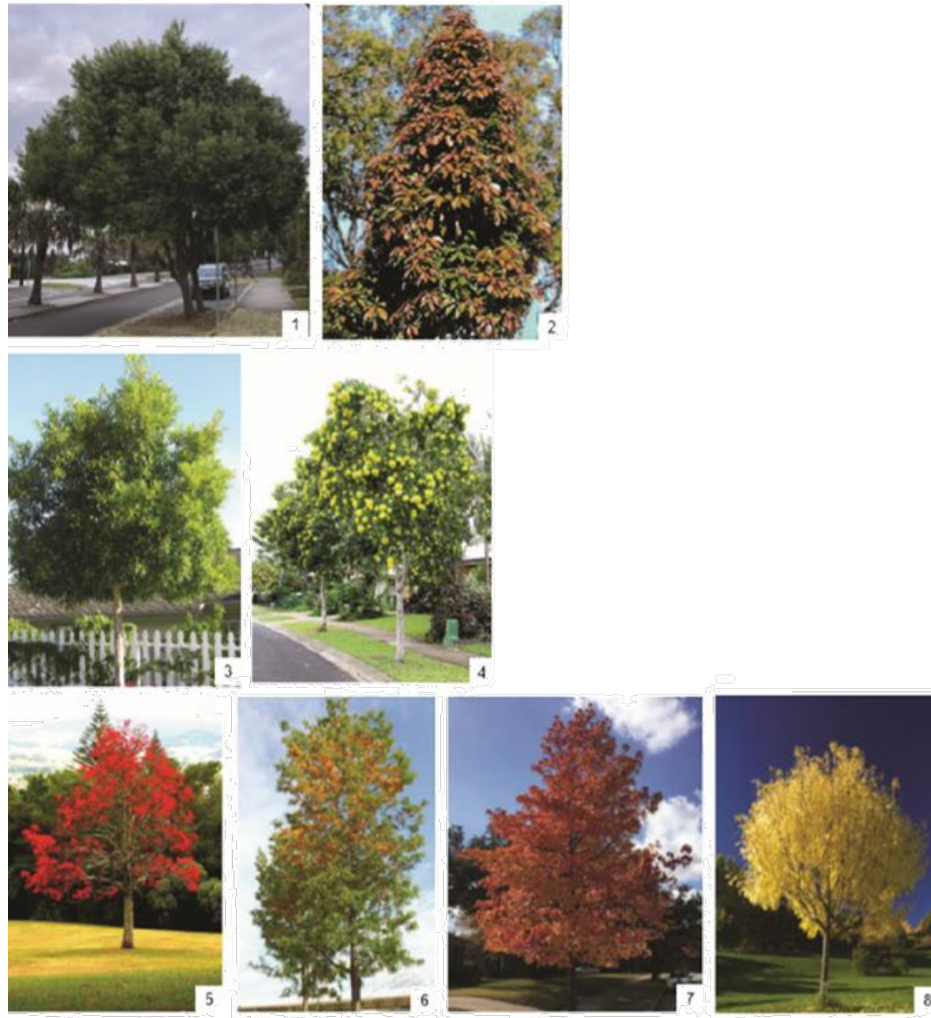


COMMUNITY ACTIVATION

ECONOMIC REGENERATION




Botanical Name	Common Name	Flowering Season
Liquidambar styraciflua	Tree Spreading	Spring
Platanus acerifolia	European Spreading	Summer
Malus domestica	Apple	Summer
Malus domestica 'Golden Delicious'	Golden Delicious	Summer
Malus domestica 'Red Fuji'	Red Fuji	Summer
Malus domestica 'Granny Smith'	Granny Smith	Summer
Malus domestica 'Pink Lady'	Pink Lady	Summer
Malus domestica 'Gala'	Gala	Summer
Malus domestica 'Fuji'	Fuji	Summer
Malus domestica 'Jonagold'	Jonagold	Summer
Malus domestica 'Empire'	Empire	Summer
Malus domestica 'Riverside Red'	Riverside Red	Summer
Malus domestica 'Spartan'	Spartan	Summer
Malus domestica 'Wine Red'	Wine Red	Summer
Malus domestica 'Red Spur'	Red Spur	Summer
Malus domestica 'Pink Spur'	Pink Spur	Summer
Malus domestica 'White Spur'	White Spur	Summer
Malus domestica 'Yellow Spur'	Yellow Spur	Summer
Malus domestica 'Green Spur'	Green Spur	Summer
Malus domestica 'Purple Spur'	Purple Spur	Summer
Malus domestica 'Orange Spur'	Orange Spur	Summer
Malus domestica 'Red Spur 2'	Red Spur 2	Summer
Malus domestica 'Pink Spur 2'	Pink Spur 2	Summer
Malus domestica 'White Spur 2'	White Spur 2	Summer
Malus domestica 'Yellow Spur 2'	Yellow Spur 2	Summer
Malus domestica 'Green Spur 2'	Green Spur 2	Summer
Malus domestica 'Purple Spur 2'	Purple Spur 2	Summer
Malus domestica 'Orange Spur 2'	Orange Spur 2	Summer
Malus domestica 'Red Spur 3'	Red Spur 3	Summer
Malus domestica 'Pink Spur 3'	Pink Spur 3	Summer
Malus domestica 'White Spur 3'	White Spur 3	Summer
Malus domestica 'Yellow Spur 3'	Yellow Spur 3	Summer
Malus domestica 'Green Spur 3'	Green Spur 3	Summer
Malus domestica 'Purple Spur 3'	Purple Spur 3	Summer
Malus domestica 'Orange Spur 3'	Orange Spur 3	Summer
Malus domestica 'Red Spur 4'	Red Spur 4	Summer
Malus domestica 'Pink Spur 4'	Pink Spur 4	Summer
Malus domestica 'White Spur 4'	White Spur 4	Summer
Malus domestica 'Yellow Spur 4'	Yellow Spur 4	Summer
Malus domestica 'Green Spur 4'	Green Spur 4	Summer
Malus domestica 'Purple Spur 4'	Purple Spur 4	Summer
Malus domestica 'Orange Spur 4'	Orange Spur 4	Summer




8.5 Planting Palette - Street Trees

Botanic Name	Common Name	Flowers/ Colour
Legacy Tree		
1: <i>Eleocharpus obovatus</i>	Hard Quandong	Spring
2: <i>Eleocharpus eumundii</i>	Eumundi Quandong	Summer
Street Tree		
3: <i>Tristena laurina</i>	Water Gum	Summer
4: <i>Xanthostemon chrysanthus</i>	Golden Penda	Summer/ Autumn
Feature Tree Options		
5: <i>Brachycton acerfolius</i>	Flame Tree	Spring
6: <i>Grevillea robusta</i>	Silky Oak	Spring
OR		
7: <i>Liquidamber styraciflua</i>	Sweet Gum	Autumn
8: <i>Fraxinus pennsylvanica</i>	Green Ash	Autumn



SOUTH BURNETT
REGIONAL COUNCIL



K KINGAROY
TRANSFORMATION
PROJECT

COMMUNITY ACTIVATION

ECONOMIC REGENERATION

Lantern and Lighting Designs

List Towns and Townships

- Kingaroy
 - Nanango
 - Wondai
 - Murgon
 - Blackbutt
 - Bunya Mountains
 - Maidenwell
 - Benarkin
 - Hivesville
 - Proston
 - Kumbia
 - Memerambi
 - Wooroolin
 - Tingoorra
 - Coolabunia
 - Crawford
 - Durong
 - Moffatdale
- Team to meet with Divisional Councilors to select town entry images for each lantern representing Towns or townships



COMMUNITY ACTIVATION

ECONOMIC REGENERATION







Plans / Designs

Adoption

- Civil and parking layout and Cross-section
- Renders and Design Intent
- Layouts, Cross-section
- Landscape, Feature Lighting and Treescape Design Intent
- Furniture Back Rest Design Intent
- Adopt Design in principle, with final Shared Zone, Comm Bank and O'Neil Square designs to be confirmed after community consultation



COMMUNITY ACTIVATION

ECONOMIC REGENERATION

Option 2- The Green

Feels like...

Legend

- A Feature tree plantings
- B Activities
- C Major shelter structure
- D Minor shelter structures
- E Fire and bus access through shared zone
- F Parents' bus stop location

Kingaroy Town Hall Plaza Options | B3853L-THP.01 [A] | Page 14 | 2018-01-31

SOUTH BURNETT REGIONAL COUNCIL

K KINGAROY TRANSFORMATION PROJECT

COMMUNITY ACTIVATION
ECONOMIC REGENERATION

Option 1- Urban Plaza



Feels like



Legend

- A Features tree planting
- B Assembly
- C Major shelter structures
- D Minor shelter structures
- E Community multipurpose room
- F Community concession stand
- G Row and Bus access through board zone



Kingaroy Town Hall Plaza Options | B385.3L-THP 03 [A] | Page 9 | 2018-01-31



COMMUNITY ACTIVATION

ECONOMIC REGENERATION

Community Zone Concept

- Shared Community Zone activating Glendon Street
- Bringing the Design together
- Infrastructure allocation for events and festivals
- Linking Themes through lighting and artwork
- Critical to success of Funding Application – differentiated KTP from other CBD projects



COMMUNITY ACTIVATION

ECONOMIC REGENERATION



COMMUNITY ACTIVATION
ECONOMIC REGENERATION





Key Project Benefits

Refer to 5 Renders of Data Sheets (Prospectus)

- Smart Country
- Data Innovation
- Inclusiveness, Liveability and Identity
- Construction Economic Impact
- Assets and Sustainability



COMMUNITY ACTIVATION

ECONOMIC REGENERATION



K KINGAROY TRANSFORMATION PROJECT

COMMUNITY ACTIVATION

ECONOMIC REGENERATION

Data Innovation

Provision of infrastructure that accommodates for future technological advances including:

- Infrastructure that enables future fibre to the node high speed Internet which will increase business adaptation and adoption of technologies such as cloud computing, data and analytics, ML / AI and remote working and teleconferencing.
- Data capacity that will also support specialised high demand applications such as e-health, autonomous industry and labour augmentation
- Supporting the installation of electric car charging stations to accommodate future demand
- Allowance for future automation capacities in delivery infrastructure, metering, devices including autonomous vehicles
- CCTV networks expansion which will deter criminal activity and provide community peace of mind
- Movement into virtual tourism, marketing and advertising of local community events with opportunity for virtual reality and augmented reality promotional functions and app capabilities i.e. QR Codes, Travel Applications etc.
- Structures will allow community Wi-Fi connectivity which assist in disaster situations, supports education and digital literacy, supports tourism and town promotion and enables greater social cohesion through providing additional connectivity for Kingaroy

SOUTH BURNETT REGIONAL COUNCIL

K KINGAROY TRANSFORMATION PROJECT



K KINGAROY TRANSFORMATION PROJECT

COMMUNITY ACTIVATION

ECONOMIC REGENERATION

Construction Economic Impact

- **Increase in output - \$22.43M**
The combination of all direct, industrial and consumption effects would result in a total estimated rise in output of \$22.43M in the South Burnett Regional Council economy. Output is the gross sales of an industry, which includes the cost of inputs to that industry.
- **Increase in value-added impact - \$8.12M**
The combination of all direct, industrial and consumption effects would result in an estimated addition in value added of \$8.12M in South Burnett Regional Council economy. Value added is the value of sales generated by each industry, minus the cost of its inputs.
- **Increase in Local Jobs - 57**
The combination of all direct, industrial and consumption effects would result in a total estimated increase of 57 jobs located in South Burnett Regional Council LGA.
- 118 jobs in the wider Australian economy including South Burnett Regional Council LGA
- Council to utilise local contractors and suppliers where possible

COMMUNITY ACTIVATION

ECONOMIC REGENERATION

K KINGAROY TRANSFORMATION PROJECT

COMMUNITY ACTIVATION

ECONOMIC REGENERATION

Smart Country

- Enabling infrastructure for fibre optic cabling that will increase internet capabilities and enhance future economic activity and employment opportunities
- Ability to connect with the community and visitors through interactive mobile apps and technology offering information on Kingaroy and surrounding towns and villages
- Enabling future capacity for a CBD Wi-Fi Network with the installation of technology capable infrastructure
- Allowing for future demand of electric car chargers by installing an easily accessible pipe network
- Installation of an Interactive and programmable feature lighting that has capacity to be used to support events such as Cancer Awareness/Are you Ok Day etc.
- Lower energy consumption, power offsets and simple maintenance through master planned systems and solar panels
- CPTED - Crime Prevention Through Environmental Design including the installation of CCTV Network and lighting
- Use of recycled water through an automated subsoil irrigation system
- Transfer of powerlines underground including the removal of all poles and replacement of legacy light poles

K KINGAROY TRANSFORMATION PROJECT

COMMUNITY ACTIVATION

ECONOMIC REGENERATION

Assets and Sustainability

- Complete renewal of all footpath and pedestrian accesses to reconstruct and achieve compliant access and mobility throughout the CBD for all people
- Complete renewal of all road pavements to remove damaged areas, address failures and to restore the lifecycle of road assets
- Installation of low-cost Council owned data and electrical networks that support future network expansions without the future large cost of excavations
- Targeted replacement of infrastructure that is damaged and/or past its life expectancy e.g. existing asbestos watermains, communications pits and stormwater system
- Replacement of traffic signals, street lighting and communication infrastructure that supports improvements in pedestrian safety and vehicular movements
- Enhanced sustainability with the installation of energy efficient lighting & the installation of irrigation using recycled water for all gardens
- Considered approach to recycling/repurposing redundant building materials excavated from the existing road pavement or footpaths

SOUTH BURNETT
REGIONAL COUNCIL

K KINGAROY TRANSFORMATION PROJECT

COMMUNITY ACTIVATION

ECONOMIC REGENERATION



K KINGAROY TRANSFORMATION PROJECT

COMMUNITY ACTIVATION

ECONOMIC REGENERATION

Inclusiveness, Liveability and Identity

- An increase in disability parking from 6 to 30 designated bays will ensure that no person with a disability will have to travel more than 50m to any shop within the CBD
- Improved mobility and accessibility for all people through fully compliant footpath grading, kerb ramps and crossings
- Introduction of designated parking for the elderly and patrons with prams, providing safe ramp access to the footpath
- Recognition of First Nations People through infrastructure features
- Activation of streetscape with the addition of fully accessible for all people alfresco dining build outs
- Creation of an inviting, modern and safe CBD for residents and tourists to enjoy day or night
- Increased caravan and trailer parking to support RV friendly requirements encouraging longer tourist stays
- Inclusion of arts and design celebrating Kingaroy's identity and infrastructure showcasing the signatures of the South Burnett



 SOUTH BURNETT REGIONAL COUNCIL

K KINGAROY TRANSFORMATION PROJECT

COMMUNITY ACTIVATION

ECONOMIC REGENERATION

Overview of Construction Scheduling

- Commencement in January 2021
- Planned completion in July 2022
- 4-6 Months per block
- Progressive completion within stages to minimize impacts
- May be some parallel works in different areas required

* final program is subject to change dependent on construction and co-ordination requirements



COMMUNITY ACTIVATION

ECONOMIC REGENERATION

7 CLOSURE OF MEETING