

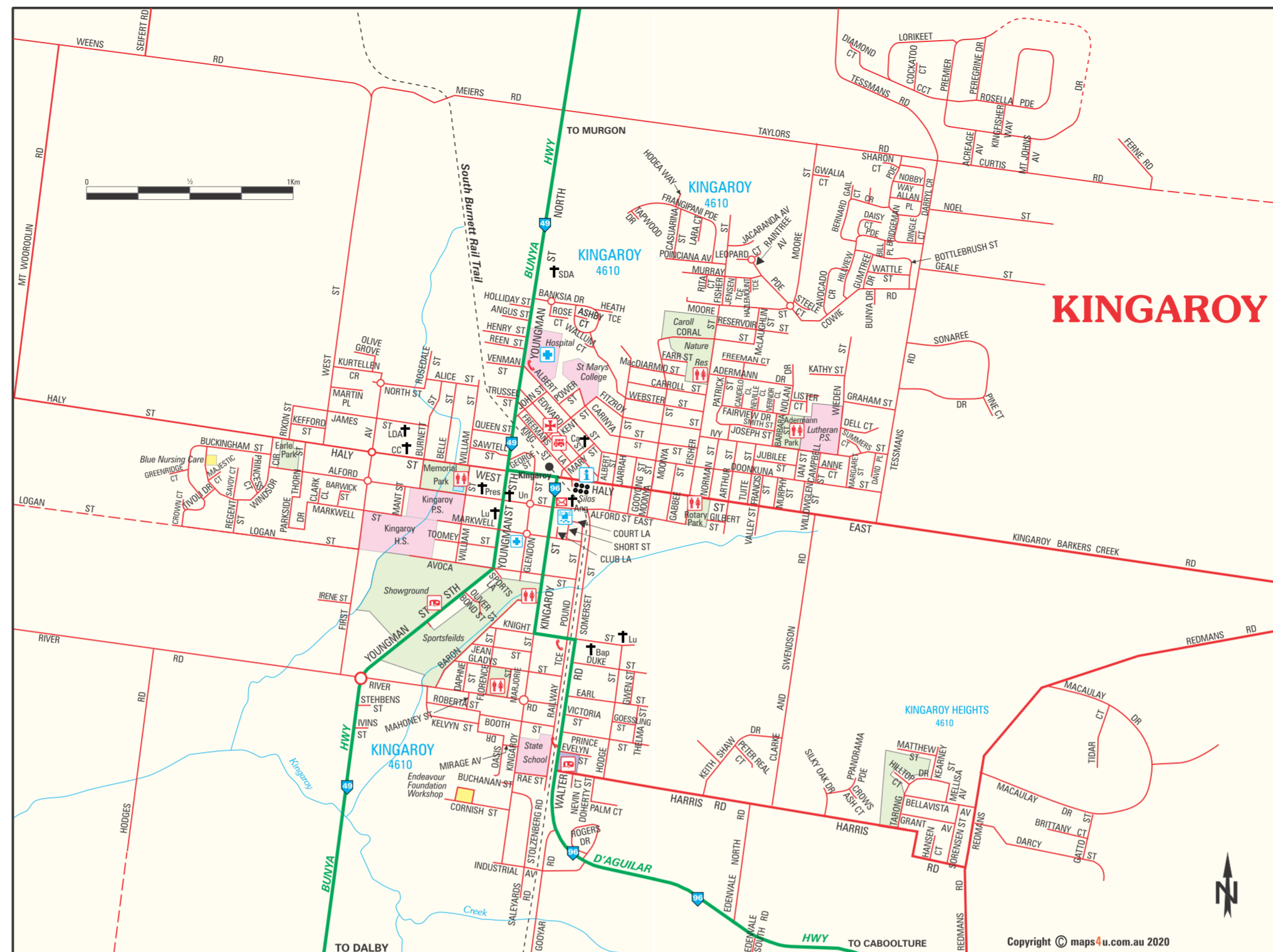
welcome to **SOUTH BURNETT**

Located on the edge of the Great Dividing Range, South Burnett is an easy two hour drive from Brisbane and directly west of the Sunshine Coast.

Regional Road Map



Tel: 07 4189 9100 | info@sbrc.qld.gov.au | www.southburnett.qld.gov.au



Let one of our Visitor Information Centres help you plan your stay in the South Burnett.



Kingaroy Visitor Information Centre
128 Haly St, Kingaroy
07 4189 9172
kingaroyvic@southburnett.qld.gov.au



Murgon Visitor Information Centre
Lamb St, Murgon
07 4189 9387
murgonvic@southburnett.qld.gov.au



Nanango Visitor Information Centre
South Burnett Energy Centre,
41 Henry St, Nanango
07 4189 9446
nanangovic@southburnett.qld.gov.au

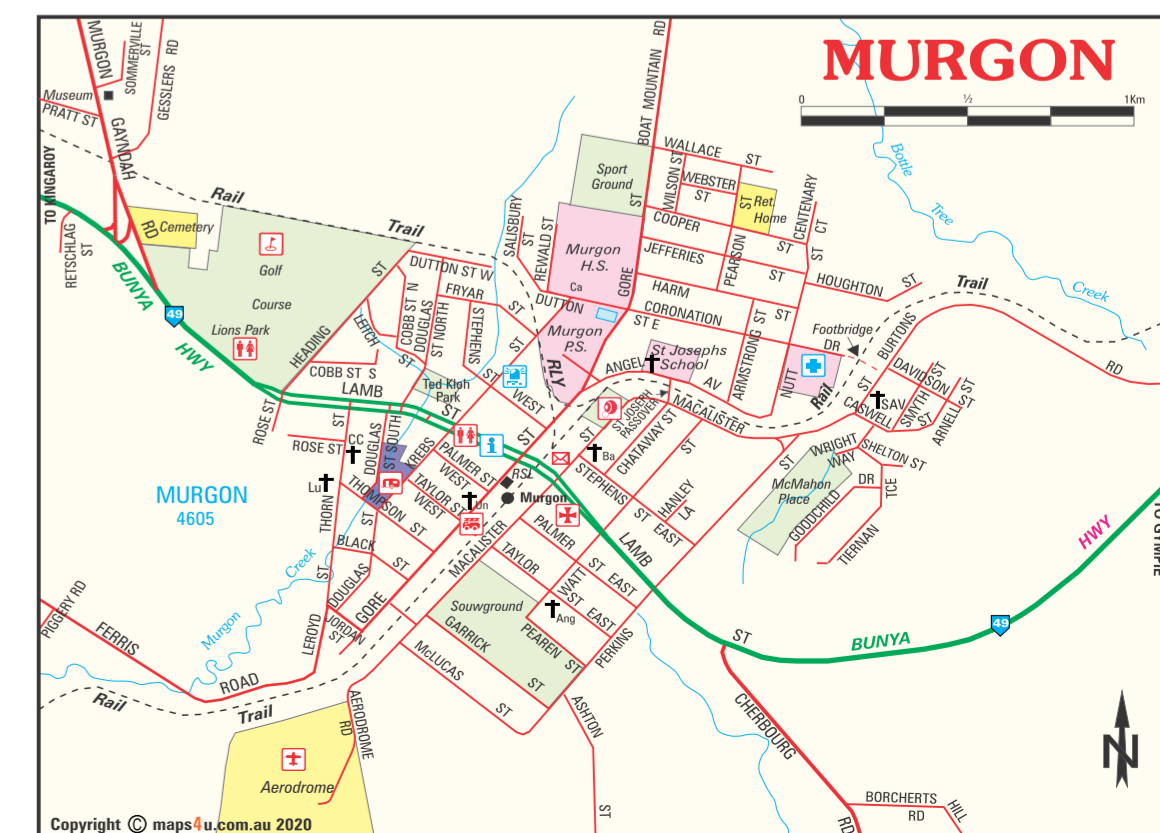
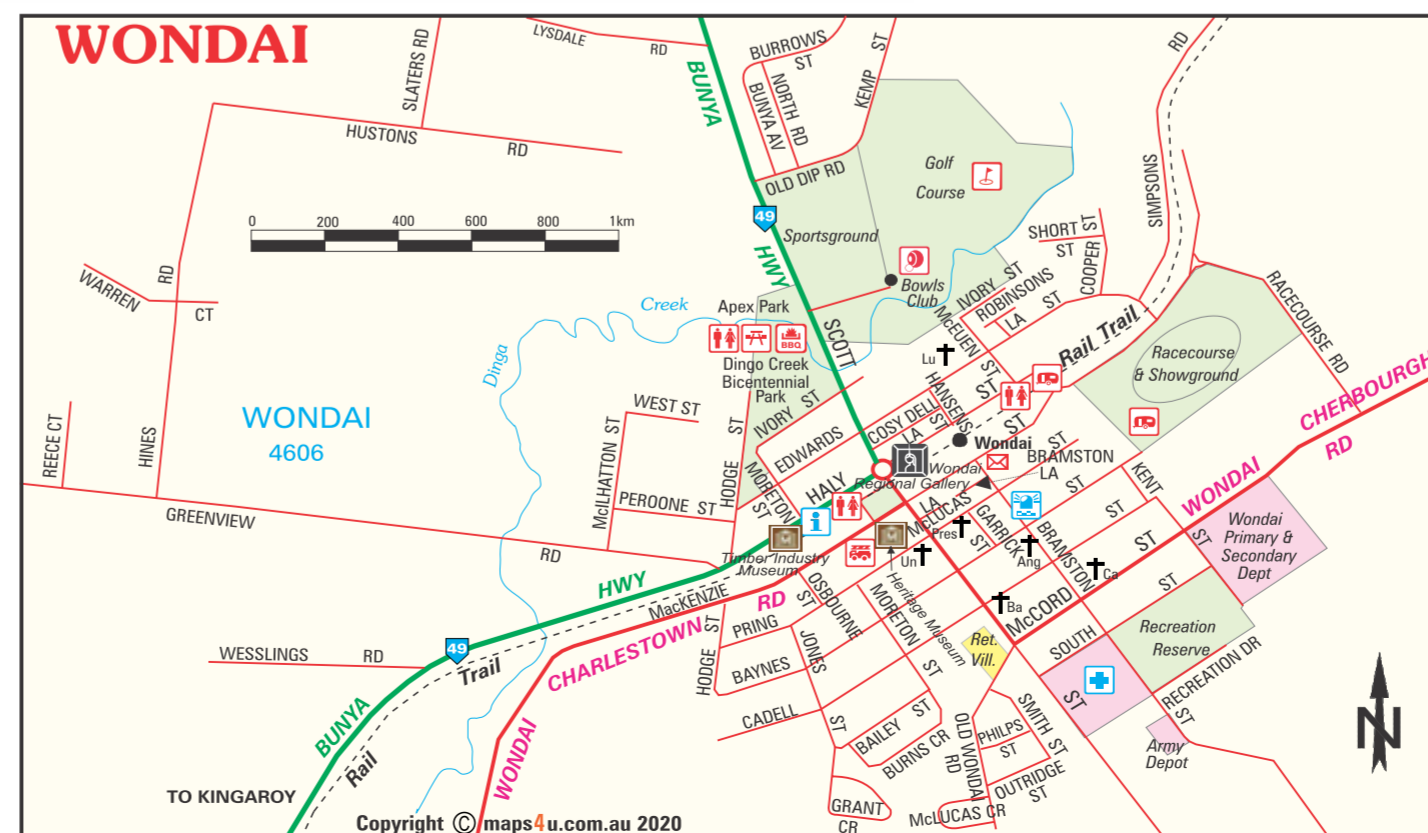
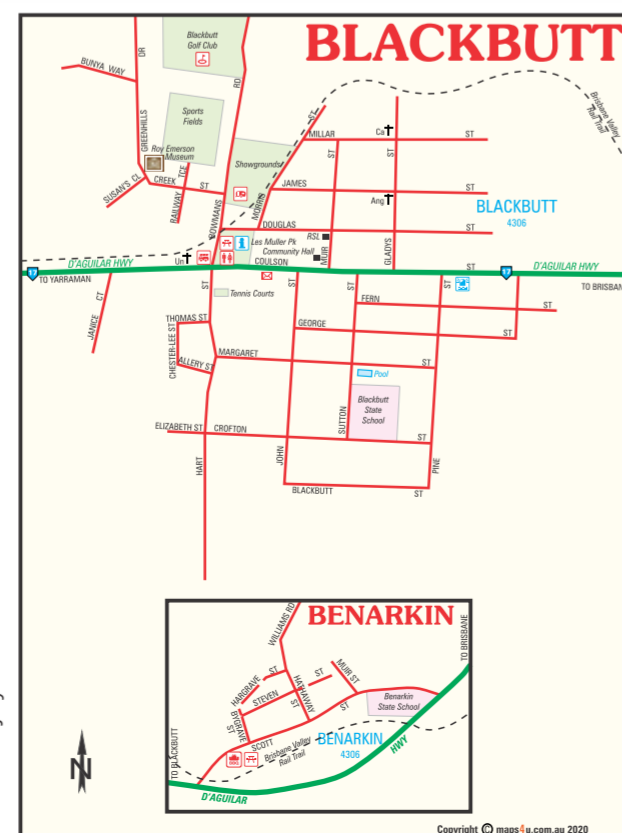


Wondai Visitor Information Centre
South Burnett Timber Museum,
80 Haly St, Wondai
07 4189 9251
wondaivic@southburnett.qld.gov.au



POINTS OF INTEREST

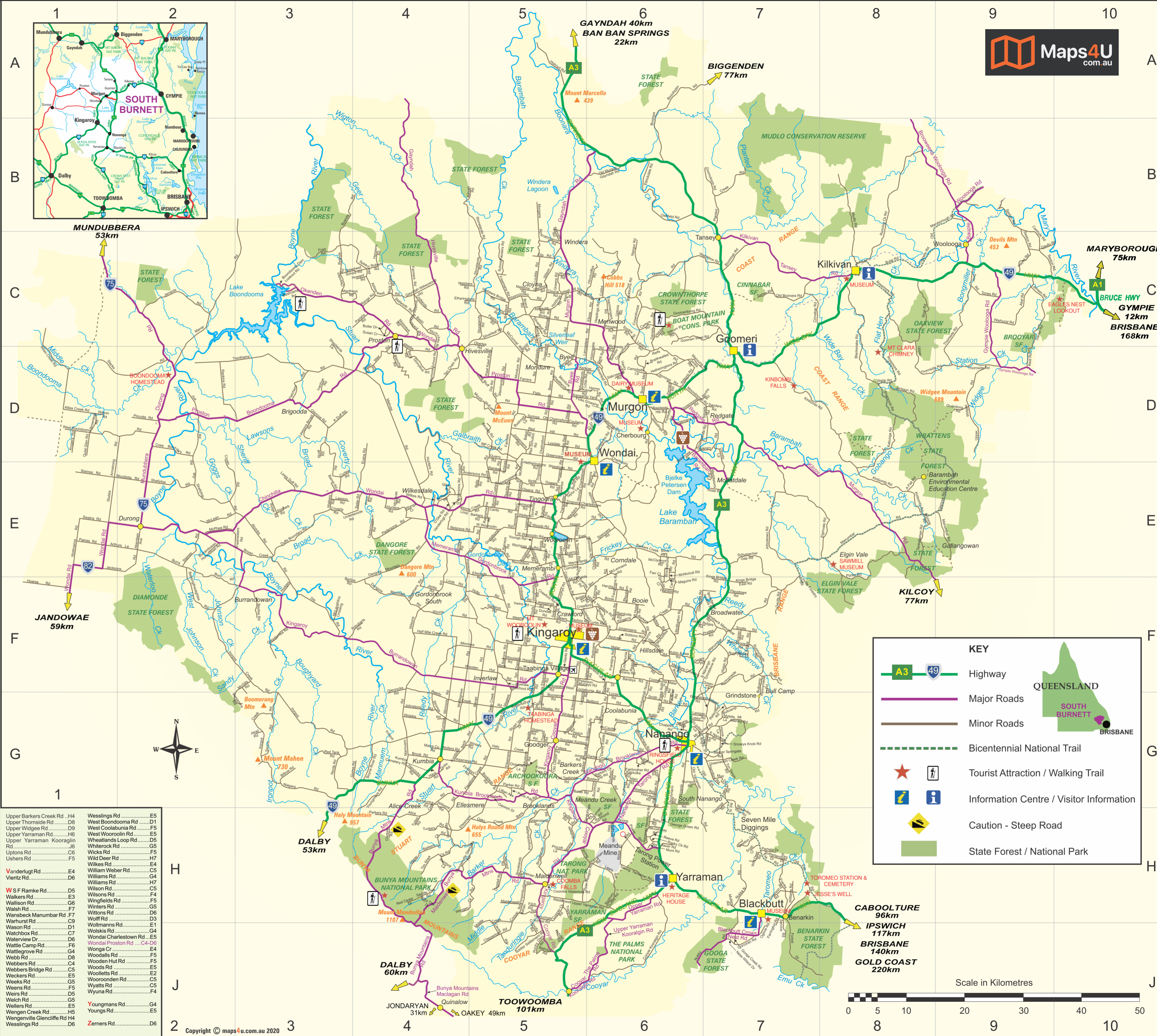
1. Boondooma Dam
2. South Burnett Wineries
3. Peanut Silos
4. South Burnett Rail Trails
5. Coomba Falls
6. Bjelke-Petersen Dam
7. Bunya Mountains
8. Boondooma Homestead
9. South Burnett Art Galleries
10. South Burnett Museums



Published July 2021

ROAD INDEX

Table listing road names and their corresponding grid coordinates (e.g., A1, A2, A3, B1, B2, B3, C1, C2, C3, D1, D2, D3, E1, E2, E3, F1, F2, F3, G1, G2, G3, H1, H2, H3, I1, I2, I3, J1, J2, J3).



KEY
A3 49 Highway
Major Roads
Minor Roads
Bicentennial National Trail
Tourist Attraction / Walking Trail
Information Centre / Visitor Information
Caution - Steep Road
State Forest / National Park

